

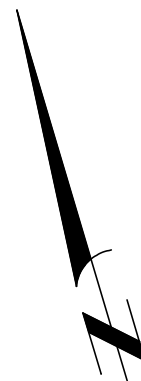
# REFERENCE PLAN OF LEASE OVER PART OF LOT A, SECTIONS 85 & 88, METCHOSIN DISTRICT, PLAN VIP \_\_\_\_\_

PURSUANT TO SECTION 99(1)(h) LTA  
BCGS 92B043

SCALE 1 : 750



All distances are shown in metres.



## LEGEND

Integrated Survey Area No. 51, District of Langford, NAD83 (CSRS).

Grid bearings are derived from observations between geodetic control monuments 95H2054 and 95H2066.

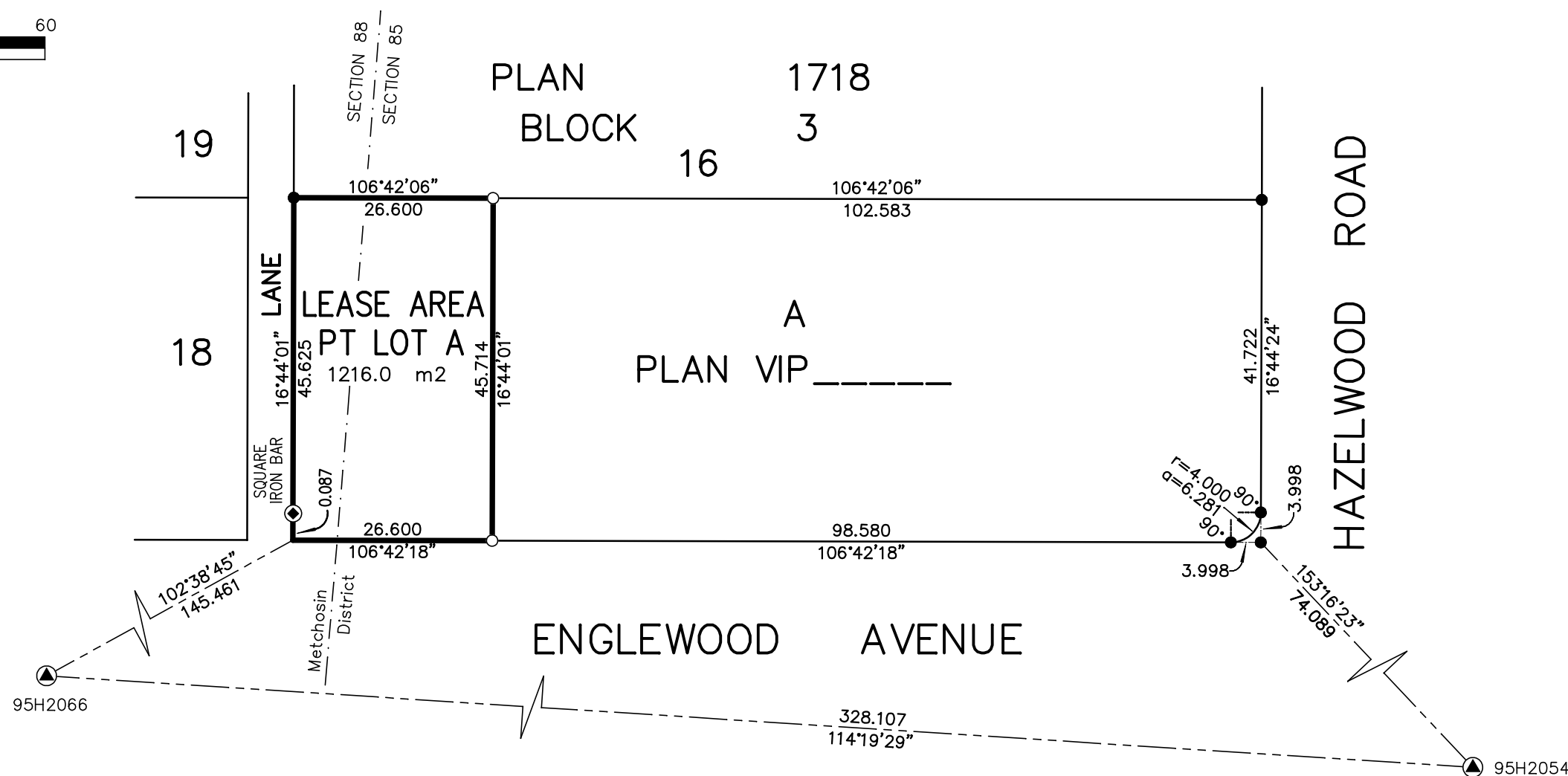
This plan shows horizontal ground-level distances except where otherwise noted. To compute grid distances, multiply ground-level distances by combined factor 0.99961145.

Found	Set	Denotes
●	○	Standard Iron Post
▲		Control Monument
◆		Non Standard Iron Post

Plan VIP \_\_\_\_\_

Deposited in the Land Title Office at Victoria,  
B.C., this \_\_\_\_\_ day of \_\_\_\_\_, 2009.

Registrar \_\_\_\_\_



File: 9881 LEASE (13W)  
POWELL & ASSOCIATES  
B C Land Surveyors  
250-2950 Douglas Street  
Victoria, BC V8T 4N4  
phone (250) 382-8855

I, James Worton , a British Columbia Land Surveyor, of Victoria, in British Columbia, certify that I was present at and personally supervised the survey represented by this plan, and that the survey and plan are correct. The field survey was completed on the 9th day of February, 2009. The plan was completed and checked, and the checklist filed under #95810, on the 30th day of April , 2009.

This plan lies within the  
Capital Regional District.

James Worton, B.C.L.S.